



EVERSHINE BUILD INDIA PVT. LTD.

An ISO 9001 : 2008 Certified Company

“Evershine Build India Private Limited”, an ISO 9001: 2008 certified company was incorporated in 2008 in Hyderabad with an objective of making building and construction practices efficient through innovative Dry Mix and Construction Chemicals Building Products. Our manufacturing unit has a production capacity of 60,000 MTPA.

“Our strength lies in continuous Research & Development, Quality Products & Service, Commitment and Diligence of our resources.”

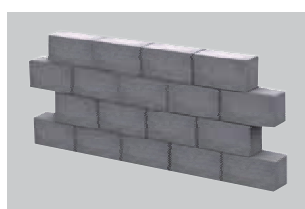
Our products accelerate the pace of construction work because of their versatile features such as ready to use, high performance and durability.

Vision, Mission and Values

|  Vision |  Mission |  Core Values |
|---|---|--|
| <p>“To consistently improve what is essential for human progress by mastering scientific and technological know-how”.</p> | <p>“To enhance construction productivity by delivering reliable and dynamic solutions.”</p> | <p>“Our main goal is to consistently explore pioneering ways to bring paramount value to our customers and set benchmarks in quality of products, services, and customer satisfaction with our core value- “Dedication to Excellence”.</p> |



Tile & Stone Installations



AAC Block Jointing Mortar & Plaster



Cracks & Repair Mortar



Tile & Stone Care Solutions



TILE ADHESIVE

| | |
|--|----------|
| PolyGlaze Tile Adhesive - Floor | 3 |
| PolyGlaze Tile Adhesive - XT | 3 |
| PolyGlaze Tile Adhesive - Plus | 4 |
| PolyGlaze Tile Adhesive - Grey | 4 |
| PolyGlaze XT - Flex | 5 |
| PolyGlaze White Tile Adhesive | 5 |

TILE JOINT GROUT

| | |
|---------------------------------|----------|
| PolyGlaze Tile Grout | 7 |
| PolyGlaze SF Epoxy Grout | 7 |

BLOCK FIXING & PLASTER

| | |
|----------------------------------|----------|
| PolyGlaze Jointing Mortar | 9 |
| PolyGlaze Plaster | 9 |

CRACKS & REPAIR MORTAR

| | |
|---------------------------------|-----------|
| PolyGlaze Crack 'O' Fill | 11 |
| PolyGlaze Repair Mortar | 11 |

TILE & STONE CARE SOLUTIONS **12**

Cement-based adhesives





Benefits

- Polymer modified New construction floor Adhesive
- High tensile adhesion strength
- It Ideal for fixing ceramic tiles, vitrified tiles, mosaic tiles and other floor tiles in interior areas.
- Easy to mix & apply

Areas of Application

- Interior & Exterior floor applications

Pack Size : 20kg PP Bags

Coverage : Aproximately 50-55 Sft. @ 3mm Thickness.

Compliance : Product conforms to ANSI : A 118.4, EN 1348 & IS15477.

Technical Information : "PolyGlaze Tile Adhesive - Floor"

| | |
|---------------------------|---|
| FORM | Grey Dry Powder |
| SHELF LIFE | 12 months in unopened manufacturer's packaging |
| MIX PROPORTIONS | 20 - 25% by weight |
| POT LIFE | Approx. 45 minutes |
| OPEN TIME | 30 - 45 minutes |
| BED THICKNESS | 3 - 4 mm |
| TIME TO TRAFFIC | Grout after 12 hours; light foot traffic after 24 hours; Full traffic after 48 hours (depending on site conditions) |
| TENSILE ADHESION STRENGTH | > 1N/mm ² after 28 days |
| SELF CURING | Yes |
| GRADE | Type 2 Floor Adhesive |



Benefits

- High tensile polymer modified tile/stone adhesive
- It can be used in damp areas
- Suitable for fixing ceramic tile, vitrified tiles & natural stones
- Suitable for interior & exterior applications.
- Suitable for Tile on Tile works on existing tiles
- Easy to mix & apply

Areas of Application

- Bathrooms & Kitchens
- Swimming Pools
- Internal & External Cladding

Pack Size : 20kg PP Bags

Coverage : Aproximately 60-70 Sft. @ 3mm Thickness.

Compliance : Product conforms to ANSI : A 118.4, EN 1348 & IS 15477 for C2TES1, TYPE 2.

Technical Information : "PolyGlaze Tile Adhesive - XT"

| | |
|---------------------------|---|
| FORM | Grey Dry Powder |
| SHELF LIFE | 12 months in unopened manufacturer's packaging |
| MIX PROPORTIONS | 20 - 25% by weight |
| POT LIFE | Approx. 30 minutes |
| OPEN TIME | 20 - 30 minutes |
| BED THICKNESS | 3 - 4 mm |
| TIME TO TRAFFIC | Grout after 12 hours; light foot traffic after 24 hours; Full traffic after 48 hours (depending on site conditions) |
| TENSILE ADHESION STRENGTH | > 1N/mm ² after 28 days |
| SELF CURING | Yes |
| GRADE | Type 2 Adhesive |



Benefits :

- Easy to mix & use
- It can be used in damp areas.
- Its Ideal for fixing ceramic tiles / vitrified tiles/ mosaic tiles / natural stones like granite, marble on RCC Surface, ceiling, vertical & horizontal application.
- High tensile adhesion strength.
- Suitable for external & internal application like cladding.

Applications:

- To fix wall and floor tiles, natural stones like granite, marble etc.
- Bathrooms and kitchens.
- Fixing the facades.
- Swimming pools.
- Tile on tile application
- To fix Tile & Natural Stones on RCC and Ceiling Surface

Compliance : Product conforms to ANSI : A 118.4, IS 15477 & EN 1348 for C2TES1, TYPE 2.



| Technical Information : "PolyGlaze Tile Adhesive - Plus" | |
|--|---|
| FORM | Grey Dry Powder |
| PACKAGING | 40 Kg PP Bags |
| SHELF LIFE | 12 months in unopened manufacturer's packaging |
| MIX PROPORTIONS | 20 - 25% by weight |
| POTLIFE | Approx. 45 minutes |
| OPEN TIME | 20 - 30 minutes |
| BED THICKNESS | 3 - 4 mm |
| TIME TO TRAFFIC | Grout after 12 hours; light foot traffic after 24 hours; Full traffic after 48 hours (depending on site conditions) |
| COVERAGE | 120 - 130 sq.ft/ 40 kg bag @ 3 - 4mm thickness |
| TENSILE ADHESION STRENGTH | > 1.5N/mm ² after 28 days |
| SELF CURING | Yes |
| GRADE | Type 2 Adhesive |



Benefits :

- Preparation is simple, Just add water
- It is suitable for both Indoor & Outdoor Use
- Polymer modified formulation enhances its durability
- Its ideal for fixing ceramic tiles / vitrified tiles / mosaic tiles / natural stones like granite, marble etc.
- Easy mixing & application

Application :

- To fix wall and floor tiles, natural stones like granite, marble etc.
- Bathrooms & Kitchens
- Fixing the facades.
- Swimming pools.

Compliance : Product conforms to ANSI : A 118.4, EN 1348 & IS 15477 : 2004 TYPE 2.



| Technical Information : "PolyGlaze Tile Adhesive - Grey" | |
|--|---|
| FORM | Grey Dry Powder |
| PACKAGING | 30 Kg PP Bags |
| SHELF LIFE | 12 months in unopened manufacturer's packaging |
| MIX PROPORTIONS | 20 - 25% by weight |
| POTLIFE | Approx. 45 minutes |
| OPEN TIME | 20 - 30 minutes |
| BED THICKNESS | 3 - 4 mm |
| TIME TO TRAFFIC | Grout after 12 hours; light foot traffic after 24 hours; Full traffic after 48 hours (depending on site conditions) |
| COVERAGE | 80 - 90 sq.ft/ 30 kg bag @ 3 - 4mm thickness |
| TENSILE ADHESION STRENGTH | > 1N/mm ² after 28 days |
| SELF CURING | Yes |
| GRADE | Type 2 Adhesive |



Benefits :

- Ready to mix, single component product.
- It is suitable for both indoor & outdoor use.
- Very high tensile adhesion strength.
- It is suitable for heavy duty application with moderate structural movements.
- It is suitable for fibre cement boards, wooden floor for both interior and exterior surfaces.
- Water resistant.

Areas of Use:

- To fix wall and floor tiles, natural stones like granite, marble on seasoned wood, metal surface, heavy duty applications like wall cladding at vertical surface.
- Bathrooms and kitchens.
- Fixing the facades.
- Swimming pools

Compliance : Product conforms to ANSI : A 118.4, EN 1348 & IS 15477 : 2004 for C2TES1 TYPE 2.



Technical Information : “PolyGlaze XT-Flex (Grey/White)”

| | |
|---------------------------|---|
| FORM | Grey / White Dry Powder |
| PACKAGING | 20 Kg PP Bags |
| SHELF LIFE | 12 months in unopened manufacturer's packaging |
| MIX PROPORTIONS | 20 - 25% by weight |
| POTLIFE | Approx. 30 minutes |
| OPEN TIME | 20 - 30 minutes (Depends on weather conditions) |
| BED THICKNESS | 3 - 4 mm |
| TIME TO TRAFFIC | Grout after 12 hours; light foot traffic after 24 hours; Full traffic after 48 hours (depending on site conditions) |
| COVERAGE | 60 - 70 sq.ft/ 20 kg bag @ 3 - 4mm thickness |
| TENSILE ADHESION STRENGTH | Grey > 1 N/mm ² after 28 days White > 2 N/mm ² after 28 days |
| SELF CURING GRADE | Yes Type 2 Adhesive |



Benefits :

- It is ready to use single component white adhesive
- Being ready to use material, it saves considerable time and labour
- Polymer modified formulation enhances its durability.
- Its ideal for tile on tile works and Interior & Exterior application
- Its ideal for fixing glass mosaic & natural stone on floors & walls
- High tensile adhesion strength.

Application :

- Swimming pools
- Bathrooms & Kitchens
- External facades

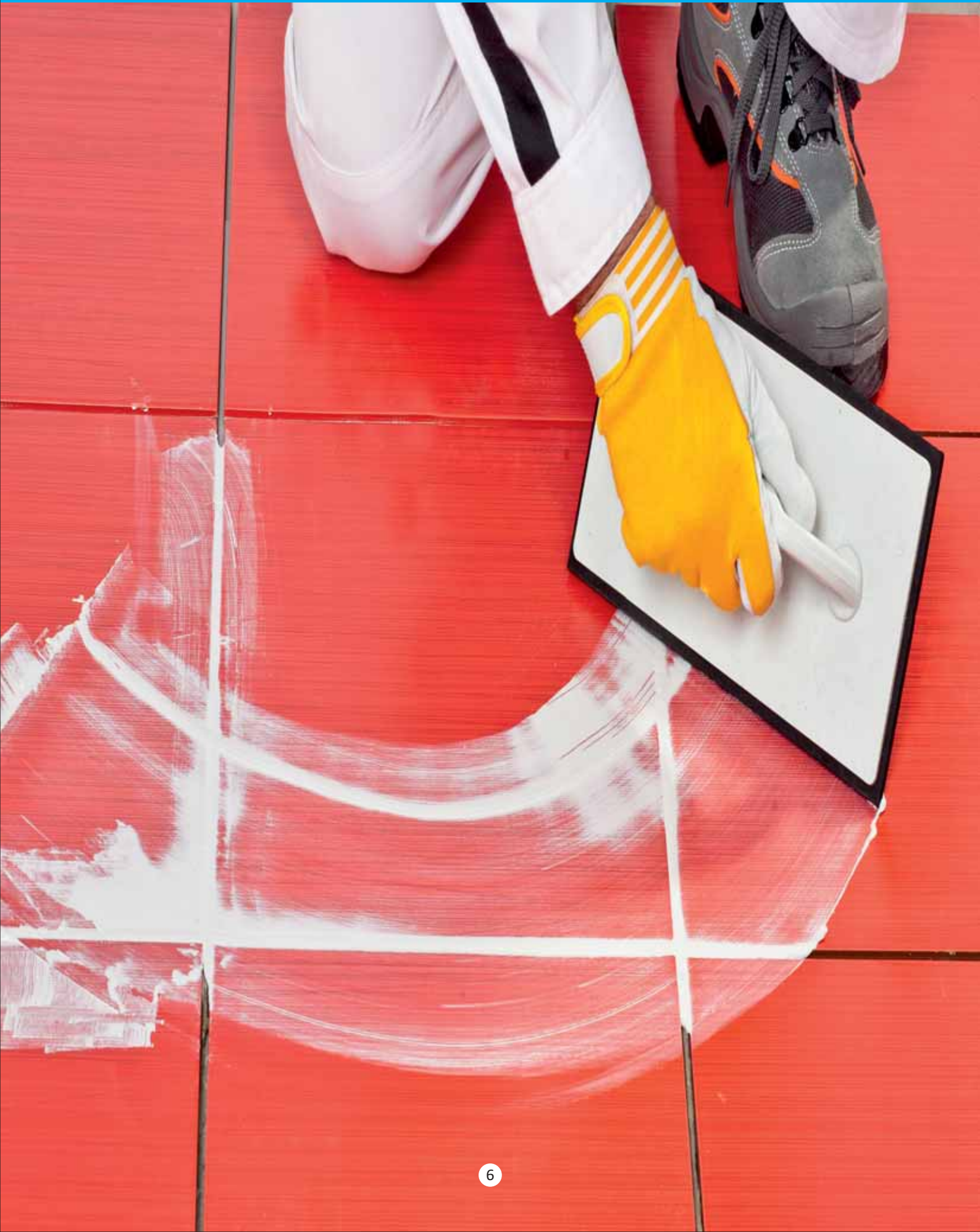
Compliance : Product conforms to ANSI : A 118.4, EN 1348 & IS 15477 : 2004 for C2TES1 TYPE 2.



Technical Information : “PolyGlaze White Tile Adhesive”

| | |
|---------------------------|---|
| FORM | White Dry Powder |
| PACKAGING | 20 Kg PP Bags |
| SHELF LIFE | 12 months in unopened manufacturer's packaging |
| MIX PROPORTIONS | 20 - 25% by weight |
| POTLIFE | Approx. 30 minutes |
| OPEN TIME | 20 - 30 minutes |
| BED THICKNESS | 3 - 4 mm |
| TIME TO TRAFFIC | Grout after 12 hours; light foot traffic after 24 hours; Full traffic after 48 hours (depending on site conditions) |
| COVERAGE | 55 - 60 sq.ft/ 20 kg bag @ 3 - 4mm thickness |
| TENSILE ADHESION STRENGTH | >1 N/mm ² after 28 days |
| SELF CURING GRADE | Yes Type 2 Adhesive |

Tile Joint Grout





Features :

- Wide joint bridging.
- Good Water resistance - can be used both indoor and outdoor tile grouting.
- Exceptional color stability
- Suitable for joints width 1 to 12mm
- Non-shrinking and high stain resistance.
- Being Polymer modified it enhances durability and helps to achieve a more robust, waterproof and flexible grout finish.

Advantages :

- "Polyglaze Tile Grout can be used in conjunction with Polyglaze Tile Adhesive (although not necessary) for grouting all types of Ceramic & Vitrified tiles, Mosaics, Porcelain, Quarry tiles, Bricks, Pavers, Slate and Natural stones. It may be used for interior and exterior- Floor, Wall and Ceilings.
- Being water resistant, Polyglaze Tile Grout can also be used for grouting wet areas like Swimming pools, power shower enclosures, etc.
- Toilets & Bathrooms

Compliance : Product conforms to ANSI : A 118.4, EN 1348 & IS 15477 : 2004.

Technical Information : "PolyGlaze Tile Grout"

| | |
|----------------------|--|
| FORM | Dry Powder (Available in Choice of Colours) |
| PACKAGING | 500 gms, 1Kg & 10Kg Pouch |
| SHELF LIFE | 12 months in unopened manufacturer's packaging |
| MIX PROPORTIONS | 25 - 30% by weight |
| POTLIFE | Approx. 45 minutes |
| OPEN TIME | 24 hours |
| TIME TO TRAFFIC | > 4 N/mm ² |
| COMPRESSIVE STRENGTH | > 3 N/mm ² |



Advantages :

- Stain free
- Chemical and temperature resistance
- Easy to clean and install
- It can be used in heavy traffic area like parking etc.
- It can be used as mortar and grout filling where extremely high strength is required.
- It has anti bacterial/anti fungal properties and therefore it can be used in kitchen, operation theaters, sterilization room and hospitals etc. where sterile condition are required.

Areas of Application :

- Application on walls and floors in internal and external areas in residential & commercial areas.
- Cafeterias/canteens/restaurants
- Chemical industries
- Swimming pools
- Institutional kitchens
- Hospitals
- Collective Showers, Bathrooms, Kitchens, etc.

Technical Information : "PolyGlaze SF Epoxy Grout"

| | |
|---|---|
| Kit Content | Part A (Resin), Part B (Hardener), Part C (Filler Powder) |
| Standard Colour | White (Refer Shade Card for Colour Options) |
| Packaging | 5.5 Kg & 1.4 Kg Bucket |
| Shelf Life | 12 Months in unopened manufacturer's packaging |
| Paste Density | 1.72 gm/cc |
| Pot Life | 45 minutes @ 28°C |
| Foot Traffic | 24 hours |
| Recommended Tile Joint Width | 2-20mm |
| Application Temperature | approx. + 10° C to +28° C |
| Can Withstand Temperature Variation Between | 0°C – 80°C |
| Initial Set Hardening Time (grout) | 4-8 hours |
| Compressive Strength @ 7 Days | >60 mpa |
| Tensile Adhesion Strength @ 7 Days | >15 Mpa |

Block Fixing and Plaster





Features of “PolyGlaze Jointing Mortar”:

- PolyGlaze Jointing Mortar is a thin bed, high strength, pre-mixed quality assured mortar comprising of Ordinary Portland Cement, specially graded sand and Polymers.
- Higher bonding strength increases durability and eliminates future maintenance.
- Non-metallic, doesn't rust out, will not discolor wall.
- Ready mixed mineral based products designed for new construction as well as for renovation purpose.
- Being premixed, it saves considerable time, labour and increases dimensional stability of the blocks.

Areas of use :

- To join fly ash bricks, cement block, hollow blocks, aerated block etc.
- Jointing of prestressed concrete slabs, panels.
- Jointing of cement window and door frames.
- Garden and boundary walls.
- Bench stands, bicycle stands.
- Ornamental Pools.

Compliance : Product conforms to ASTM C109, EN 1348 & IS 15477.

Technical Information : “PolyGlaze Jointing Mortar”

| | |
|-------------------------------------|---|
| FORM | Grey Dry powder |
| PACKAGING | 40 Kg PP Bags |
| SHELF LIFE | 12 months in unopened manufacturer's packaging |
| MIX PROPORTIONS | Approx 25% by Weight |
| POTLIFE | Approx. 45 minutes |
| HARD DRY | 24 hours |
| BED THICKNESS | 3 - 4 mm |
| COVERAGE | Approx 160 sq.ft/ 40 kg bag @ 3 - 4 mm bed thickness (100mm AAC Blocks) |
| SPLITTING TENSILE ADHESION STRENGTH | > 0.45(MV)MPa |
| COMPRESSIVE STRENGTH | > 4 N/mm ² |
| SELF CURING | Yes |



Features of “PolyGlaze Plaster”:

- PolyGlaze Plaster is a strong, durable, pre-mixed powder suitable for plastering over all types of old or new conventional clay bricks, fly ash bricks/blocks and Autoclaved Aerated Concrete blocks(AAC).
- Preparation is simple, just add water.
- Lighter than traditional cement- sand site mix mortar.
- Minimizes cracking and shrinkage.
- Prevents seepage of water.
- Fungus resistant.
- Durable & easy to apply.
- Saves both manpower and time.
- Being ready to use, it covers more work per day.

Areas of Use:

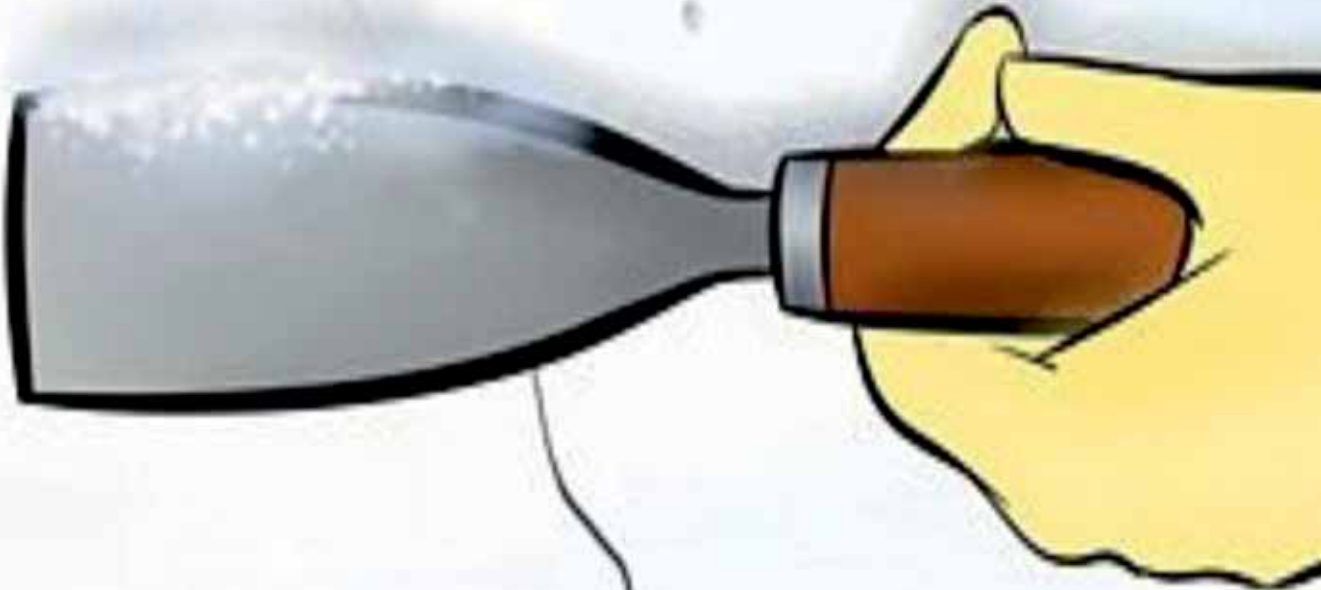
- Under coating and plastering over existing concrete and brick/block walls.
- Use as a levelling plaster for correction of surface undulation in bare concrete block and other cementitious substrates.

Compliance : Product conforms to ASTM C109, EN 1348, IS 15477 & IS 4031.

Technical Information : “PolyGlaze Plaster”

| | |
|----------------------|---|
| FORM | Grey Dry powder |
| BINDER | Ordinary Portland cement 53 Grade |
| AGGREGATE | Graded Sand |
| PACKAGING | 40 Kg PP Bags |
| SHELF LIFE | 12 months in unopened manufacturer's packaging |
| MIX PROPORTIONS | Approx. 20% by weight |
| POTLIFE | Approx. 30 minutes |
| COVERAGE | 0.16 - 0.23 kg/ sq.ft/ mm or 17 - 25 sq.ft at 10 mm thickness per 40 kg bag |
| COMPRESSIVE STRENGTH | ≥4 N/mm ² after 28 days |
| CURING TIME | 5 - 6 Days |
| COAT THICKNESS | 8 - 25 mm |
| COMPATIBILITY | Any good Quality Wall Putty/Paints etc can be used over Polyglaze Plaster |

Cracks and Repair Mortar





“PolyGlaze Crack ‘O’ Fill ” is a white cement based ready to use mortar for filling the cracks in plastered surfaces. It gives excellent bonding, is easy to apply, water resistant and highly durable. It can be used for the Repairing of internal cracks in plastered surfaces up to 3 mm width & 3 mm depth.

Features & Benefits:

- **Application** – Easily applicable by putty knife like conventional putties.
- **Adhesion** – Excellent adhesion to common building substrates other than glass.
- **Cohesiveness** – Non-sagging.
- **Flexibility** – Flexible & hence can accommodate minor movements in cracks.
- **Staining** – Non-staining.
- **Appearance** – White powder form.
- **Painting** – Over coatable with any kinds of polymer based paints after 24 hours.
- **Toxicity** – Non-toxic & safe to hands.
- **Eco-friendly** – Water based, having zero VOC, hence eco-friendly.

Compliance : Product conforms to ASTM, EN & IS.

Technical Information : “PolyGlaze Crack ‘O’ Fill”

| | |
|----------------------|--|
| FORM | White Dry powder |
| PACKAGING | 1 Kg Pouch |
| SHELF LIFE | 12 months in unopened manufacturer’s packaging |
| MIX PROPORTIONS | 20 - 25 % by weight |
| COVERAGE | 55 RFT/kg bag for 5mm x 5 mm crack. |
| SELF CURING | Yes |
| FLEXURAL STRENGTH | 3.2N/mm ² after 7 Days |
| COMPRESSIVE STRENGTH | 6.2 N/mm ² after 7 Days |



“PolyGlaze Repair Mortar” is a high strength, pre-mixed, masonry mortar for repair works, minor plastering and for laying of AAC blocks/stones. It replaces conventional cement-sand mixture for repair work. It is specially formulated & easily applicable, giving a better bonding strength.

Features & Benefits:

- Quick setting proprietary mortar.
- Higher bonding strength increase durability and eliminates future maintenance.
- Ready mixed polymer modified mortar designed for renovation and repair purposes.
- Eliminates the need of Curing.
- PolyGlaze Repair Mortar is a pre-mixed mortar which can be used for internal floors/ walls, ceilings; in fact anywhere you need to make good, patch, fill or shape repairs.
- It can also be used for works like laying blocks, for filling wall trenches, to cover all types of gaps in walls, for small repair work of staircase broken edges, for panel/boards fixing and for minor plastering purpose.
- It can also be used along with the waterproofing chemical for waterproofing purpose.

Compliance Product conforms to ASTM, EN & IS.

Technical Information : “PolyGlaze Repair Mortar”

| | |
|---------------------------|--|
| FORM | Grey Dry powder |
| PACKAGING | 5 Kg Pouch |
| SHELF LIFE | 12 months in unopened manufacturer’s packaging |
| MIX PROPORTIONS | Approx. 25% by weight |
| POT LIFE | Approx. 30 minutes |
| TENSILE ADHESION STRENGTH | > 1 N/mm ² @ 28 days |
| COMPRESSIVE STRENGTH | > 4 N/mm ² after 7 days |
| SELF CURING | Yes |

Tile and Stone Care Solutions





POLYGLAZE SEALER

WATER BASE ECOLOGICAL WATER & DIRT REPELLENT FOR EXTERNAL FACADE

PolyGlaze Sealer is a ecological formulation which protects stones from moisture and general natural stain such as mud, mildew and atmospherical changes. The anti stain action is due to its technologically advance formation and provides protection deep inside the stone pores for long period of time. PolyGlaze Sealer does not change natural aspect of the stone surface and does not create any type of film or plastic effect while allowing vapour to escape and is UV resistant.

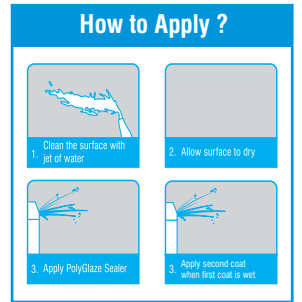
| | |
|----------------------------------|--|
| Aspect Liquid | Pack Size 1 ltr / 10 ltr |
| Color Transparent | Coverage 1 ltr - 10/15 sq.mt. |
| pH 12-13 (5% in water) | Storage Life 12 months in unopened condition |

Advantages:

- Ecological
- UV stable
- Good resistance
- Excellent stain proof property
- Good resistance against atmospheric Condition

Suitable Surface:

- Sand stone
- Terra cotta
- Natural stone
- Vertical surface



Can be Applied with::



POLYGLAZE SALT WATER SEALER

SOLVENT BASE STAIN PROOFING SEALER FOR HOMOGENEOUS SURFACE

PolyGlaze Salt Water Sealer protects tiles, marble, granite or any natural stone from salts which is present in water. The water/dirt repellent action is due to its technologically advance formation, protecting deep inside the surface for a long period of time. It will not create any film or change the natural color

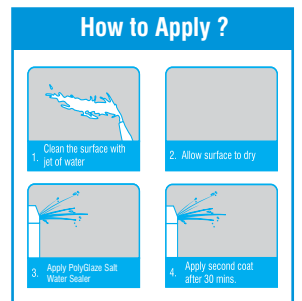
| | |
|---------------------------------|--|
| Aspect Solvent liquid | Pack Size 1 ltr / 10 ltr |
| Color Colorless | Coverage 1 ltr - 15/20 sq.mt. |
| pH N/A | Storage Life 12 months in unopened condition |

Advantages:

- Salt Resistance
- Anti Stain
- UV stable
- Non yellowing

Suitable Surface:

- Ceramic tiles
- Vitrified tiles
- Marble
- Granite



Can be Applied with:





POLYGLAZE BACK COAT

WATER BASE STAIN & WATER MARK REPELLENT FOR STONE

Polyglaze Back Coat is water base film forming cum impregnator for protection of polished or rough marble, granite and natural stone from mortar stain as well as water marks. Compatible on humid or damp surface, therefore saving time during application process.

| | |
|------------------------------|--|
| Aspect Liquid | Pack Size 1 ltr / 10 ltr |
| Color Milky white | Coverage 1 ltr - 10/15 sq.mt. |
| pH 7 (5% in water) | Storage Life 12 months in unopened condition |

Advantages:

- Prevent good resistance against mortar stain
- Easy to apply
- Good bond with cement mortar
- Penetrating cum film forming
- Natural look remain intact

Suitable Surface:

- Marble
- Granite
- Natural stone

How to Apply ?

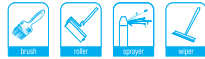
1. Clean the stone, if require do rough polish

2. Apply 2 to 3 coats wet to wet on back

3. Leave it for 30 mins

4. Fix stone on mortar bed or with adhesive

Can be Applied With:



POLYGLAZE IMPREGNATOR (WB)

WATER BASE HIGH PERFORMANCE STAIN PROOFING PRODUCT FOR NATURAL STONE

Polyglaze Impregnator (WB) is water base impregnator for the protection of polish granite and marble surface, Its ecological formulation guarantees surface protection from dirt, water, oil, grease without changing natural look and aspect of surface. Compatible with humid damp surface.

| | |
|-----------------------------------|--|
| Aspect Waterbase liquid | Pack Size 1 ltr / 10 ltr |
| Color Colorless | Coverage 1 ltr - 20/25 sq.mt. |
| pH 7 (5% in water) | Storage Life 12 months in unopened condition |

Advantages:

- Anti stain
- Enhancing
- Ecological
- Durable
- Stain repellency

Suitable Surface:

- Internal or external marble
- Granite
- Natural stone
- Engineered stone

How to Apply ?

1. Mirror finish surface

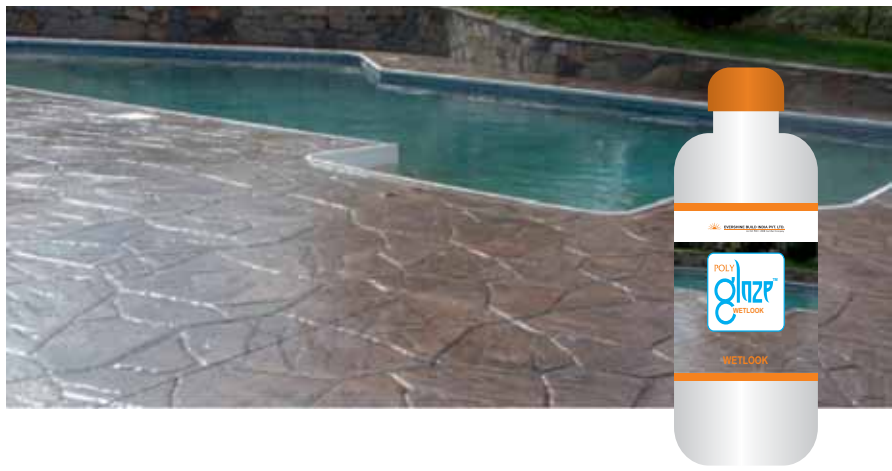
2. Apply PolyGlaze Impregnator (WB) on the surface

3. Apply second coat after 30 mins. Leave it for 24 hours

4. Buff the surface with buffing pad

Can be Applied with:





POLYGLAZE WETLOOK

SOLVENT BASE GLOSS EFFECT PROVIDING STAIN REPELLENT FOR STONE

Polyglaze Wetlook protects the stone from moisture and general stain such as oil, grease, dirt, food, mud and mildew. Magik wetlook is recommended for protection and provide color enhancement of the natural stone without destroying the clarity of the stone pattern. The anti stain action and enhancing property is due to technologically advanced formulation.

| | |
|----------------|---------------------------------|
| Aspect | Pack Size |
| Solvent liquid | 1 ltr / 10 ltr |
| Color | Coverage |
| Transparent | 1 ltr - 4/6 sq.mt. |
| pH | Storage Life |
| N/A | 12 months in unopened condition |

Advantages:

- Glossy enhance effect
- Anti stain
- Non yellowing
- UV resistance

Suitable Surface:

- Textured marble
- Flame granite
- Hond marble
- Sand stone
- Slate stone

How to Apply ?

Can be Applied With:



POLYGLAZE WHITENER

WATER BASE CLEANER TO REMOVE YELLOWISH EFFECT FROM STONE

Polyglaze Whitener is a special blend of acidic based substance. It is a heavy duty detergent specifically manufactured to remove yellowish effect from marble or granite without damaging or dulling polished surface. Highly recommend to remove yellowish effect from white marble like thassos, satvario or any white marble or granite.

| | |
|-------------------|---------------------------------|
| Aspect | Pack Size |
| Liquid | 1 ltr / 10 ltr |
| Color | Coverage |
| Transparent | 1 ltr - 10/15 sq.mt. |
| pH | Storage Life |
| 3-4 (5% in water) | 12 months in unopened condition |

Advantages:

- Fast acting
- Powerful
- High cleaning power

Suitable Surface:

- Marble
- Granite

How to Apply ?

Can be Applied with:





POLYGLAZE ACIDIC CLEANER
WATER BASE ACIDIC CLEANER FOR WASHROOM

Polyglaze Acidic Cleaner is an acidic based detergent, specifically manufactured for the removal of grout and cement residue from the surface. PolyGlaze Acidic Cleaner is a very good substitute to traditional HCL, due to its formulation and specific cleaning agent which will easily clean cement from recently set surface without damaging original color of tiles.

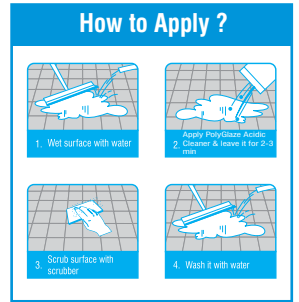
| Aspect | Pack Size |
|-------------------|---------------------------------|
| Liquid | 1 ltr / 10 ltr |
| Color | Coverage |
| Transparent | 1 ltr - 10/15 sq.mt. |
| pH | Storage Life |
| 2-3 (5% in water) | 12 months in unopened condition |

Advantages:

- Powerful detergent formula
- Easy cleaning
- Economical

Suitable Surface:

- Any type of tiles
- RCC



Can be Applied With:



POLYGLAZE NATURAL CLEANER:
pH NATURAL CLEANER FOR ANY SURFACE

Polyglaze Natural Cleaner is a concentrated pH neutral floor cleaner for daily maintenance of every floor surface. The product formulation cleans effectively while leaving a pleasant fresh fragrance. Product does not change natural property of surface.

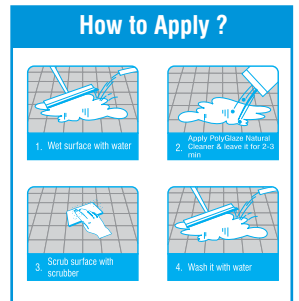
| Aspect | Pack Size |
|-------------------|---------------------------------|
| Liquid | 1 ltr / 10 Ltr |
| Color | Coverage |
| Transparent | 1 ltr - 10/15 sq.mt. |
| pH | Storage Life |
| 3-4 (5% in water) | 12 months in unopened condition |

Advantages:

- Excellent cleaning property
- Very low dose (20-50 gm/ltr)
- Versatile
- Easy cleaning of dirt
- Clean superficial layer easily

Suitable Surface:

- Natural stone
- Pocolain stone
- Ceramic
- Quartz



Can be Applied with:





POLYGLAZE POLISH CLEANER

WATER BASE pH NATURAL CLEANER FOR POLISH SURFACE

Polyglaze Polish Cleaner is pH neutral detergent which remove dirt, wax, marker pen marking and cement residues from surface without damaging natural property of surface.

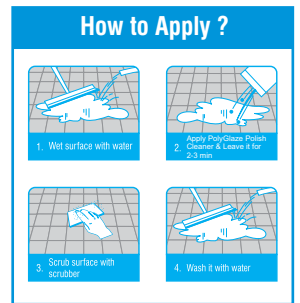
| | |
|-----------------|---------------------------------|
| Aspect | Pack Size |
| Liquid | 1 ltr / 10 ltr |
| Color | Coverage |
| Transparent | 1 ltr - 10/30 sq.mt. |
| pH | Storage Life |
| 7 (5% in water) | 12 months in unopened condition |

Advantages:

- Excellent cleaning property
- Rapid
- Heavy Cleaning effect
- Powerful on tiles

Suitable Surface:

- All Natural stone
- Tile
- Quartz
- Terra Cotta



Can be Applied With:



POLYGLAZE TILE & CONCRETE CLEANER

WATER BASE ACIDIC CLEANER FOR TILE & CONCRETE

PolyGlaze Tile & Concrete Cleaner is an acidic base detergent for the removal of cement residue, yellow stain without damaging the surface aspect or joint.

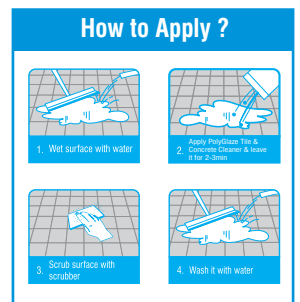
| | |
|-------------------|---------------------------------|
| Aspect | Pack Size |
| Liquid | 1 ltr / 10 ltr |
| Color | Coverage |
| Transparent | 1 ltr - 10/30 sq.mt. |
| pH | Storage Life |
| 2-3 (5% in water) | 12 months in unopened condition |

Advantages :

- Excellent cleaning property
- Rapid
- Heavy cleaning effect
- Powerful on tiles

Suitable Surface :

- Terra cotta tiles
- Ceramic tiles
- RCC



Can be Applied with:





POLYGLAZE SCALE REMOVER
WATER BASE ACIDIC CLEANER TO REMOVE SCALING

Polyglaze Scale Remover is an acidic base formulated detergent for the complete removal of scales from wash room tiles, yellow stain, mortar residues from newly fixed tiles and cement residue, efflorescence from surface. Also recommended to remove cement joint color from tiles.

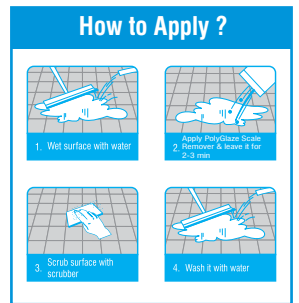
| | |
|-------------------|---------------------------------|
| Aspect | Pack Size |
| Liquid | 1 ltr / 10 ltr |
| Color | Coverage |
| Transparent | 1 ltr - 10/30 sq.mt. |
| pH | Storage Life |
| 2-3 (5% in water) | 12 months in unopened condition |

Advantages:

- Excellent cleaning
- Rapid
- Easy cleaning of the tough stain

Suitable Surface:

- Sand stone
- Honed stone
- Quartz agglomerates
- Ceramic
- Terra cotta tiles
- Polish/rough granite
- All surface resistance to acid



Can be Applied With:



POLYGLAZE EGFR
WATER BASE pH NATURAL CLEANER TO REMOVE ANY FILM FORMULATION

PolyGlaze EGFR is a pH neutral detergent which removes oil, grease, bituminous stain, stain, carbon dust, any stickness on surface. The product is capable of removing cement residues, marker pen marking without damaging the natural property of surface with ease. Highly recommended to remove Epoxy Grout Film from any surface.

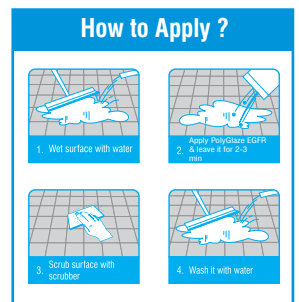
| | |
|-----------------|---------------------------------|
| Aspect | Pack Size |
| Liquid | 1 ltr / 10 Ltr |
| Color | Coverage |
| Transparent | 1 ltr - 10/30 sq.mt. |
| pH | Storage Life |
| 7 (5% in water) | 12 months in unopened condition |

Advantages:

- Powerful
- Heavy duty
- Rapid action
- Good cleaning

Suitable Surface:

- All natural stone
- Tile
- Quartz
- Terra cotta
- Glass mosaic



Can be Applied with:



OUR VALUED CLIENTELE

Evershine has added some of Indias Largest and Most Prestigious Projects.

| Client Name | City |
|---|------|
| Acme Developers | Pune |
| Acropolis Developers | Pune |
| Atria Constructions | Pune |
| Aditya Builders & Developers | Pune |
| Ajmera Housing Corporation | Pune |
| Amit Enterprises Housing Ltd. | Pune |
| Anand Properties | Pune |
| Anshul Realities Pvt.Ltd. | Pune |
| Goel Ganga Group | Pune |
| Karandikar Promoters & Builders | Pune |
| Karia Developers | Pune |
| Lohia Jain Housing | Pune |
| Lushlife Properties LLP | Pune |
| Magarpatta City Projects | Pune |
| ABC & Mittal Group. | Pune |
| Nanded City Development & Construction Co. Ltd. | Pune |
| Nyati Group | Pune |
| Panchshil IT Park II | Pune |
| Paranjape Schemes Construction Ltd. | Pune |
| Rachna Lifestyle | Pune |
| Rainbow Developers | Pune |
| Rainbow Housing | Pune |
| Ravinanda Landmark | Pune |
| Renaissance Developers | Pune |
| Square Promoter & Builders | Pune |
| Supertech Constructions | Pune |
| Vasudha Landmark | Pune |
| Vedant Corporation | Pune |
| Venkateshwara Gangotree Associates | Pune |
| Viva Group | Pune |
| Vinode Buildcon, | Pune |
| VTP Group | Pune |
| Sancheti Properties | Pune |
| Greenovation Projects Pvt. Ltd. | Pune |
| Abhinav Group | Pune |
| Ashirwad Associates | Pune |

| Client Name | City |
|--|-----------|
| Empire Properties | Pune |
| F-5 Realtors | Pune |
| Nayal Karan Enterprises | Pune |
| Jindal Mittal Gruha Nirman | Pune |
| Pegasus Properties (Megapolis) | Pune |
| Krishna Developers (Aeropolis) | Pune |
| Puranik Buildcon Pvt. Ltd. | Pune |
| Kushal Construction Promoters & Builders | Pune |
| GKG Ventures | Pune |
| Choice Ventures | Pune |
| Sai Essen Properties | Pune |
| Sulabh Enterprises | Pune |
| Sai Tirupati Properties | Pune |
| Gagan Developers | Pune |
| Baps Swaminarayan Mandir Trust | Pune |
| Platinum Buildcon | Pune |
| Yashodhan Properties | Pune |
| Karia Realty | Pune |
| Kool Homes | Pune |
| Yash Promoters | Pune |
| Nirman Properties | Pune |
| Neev Sai Developers | Pune |
| Swastik Associates | Hyderabad |
| Sri Aditya Homes | Hyderabad |
| BPR Infrastructure Ltd. | Hyderabad |
| ICRISAT | Hyderabad |
| IL & FS Engineering & Construction | Hyderabad |
| Lodha Group | Hyderabad |
| L & T Metro, HMRL | Hyderabad |
| Meenakshi Infrastructures Pvt. Ltd. | Hyderabad |
| Muppa Projects India Pvt. Ltd. | Hyderabad |
| My Home Construction (P) Ltd. | Hyderabad |
| Priyadarshini Developers | Hyderabad |
| Puravankara Projects Ltd | Hyderabad |
| Rami Reddy Constructions | Hyderabad |
| Sew Infrastructure | Hyderabad |

OUR VALUED CLIENTELE

Evershine has added some of Indias Largest and Most Prestigious Projects.

| Client Name | City |
|---|------------|
| Ektha Prime Builders (India) Pvt. Ltd. | Hyderabad |
| Sri Krishna Ventures Pvt. Ltd. | Hyderabad |
| Vasathi Housing | Hyderabad |
| Vamsiram Builders | Hyderabad |
| Jayabheri Properties Pvt. Ltd. | Hyderabad |
| RDB HYD Infrastructure Pvt. Ltd. | Hyderabad |
| Srusti Infra | Hyderabad |
| Cybercity Builders & Developers | Hyderabad |
| Aqua Space Developers | Hyderabad |
| Landmark Infra Developers | Vijayawada |
| Shapoorji Pallonji & Construction Co. Ltd | Bangalore |
| Mantri Developers | Bangalore |
| Shrinidhi Infrastructure & Developers | Hubli |
| Lakhani Megastructure LLP | Mumbai |
| Man Infraconstruction Ltd. | Mumbai |
| Poonam Construction Housing Limited | Mumbai |
| Rustomjee | Mumbai |
| Samartha Development Corporation, | Mumbai |
| Tata Housing | Mumbai |
| Kalpataru | Mumbai |
| Trimurti Development Company | Mumbai |
| Anmol Nayantara | Nashik |
| Patil-shah Housing Corp. | Nashik |
| Prakash Constructions | Daund |
| Power Venture | Daund |
| Skyline Builders | Kerala |
| Aarti Infrastructure & Buildcon Ltd. | Raipur |
| Sachdev Buildcon Pvt. Ltd. | Raipur |
| Gold Bricks Infrastructure Pvt. Ltd | Raipur |
| Pyramid Group | Nagpur |
| Gudadhe Housing & Developers Pvt. Ltd. | Nagpur |
| Pioneer Group | Nagpur |
| Prime Infra | Indore |
| Unique Builders and Developers | Indore |
| Nikhil Estates Pvt. Ltd. | Indore |
| London Villas (The NM Group) | Indore |



WARRANTIES

The recommendations, suggestions, statements and technical data provided by the company on the current data sheet are based on the best current knowledge available and are given for information purposes only without any responsibility for their use. The company supplies products that comply with the properties shown on the current datasheets. In the unlikely event the products supplied are proved not to comply with these properties, company will replace the complaint product. The company does not warrant or guarantee the installation of the products, as it does not have control over the installation or end use of the products. Any suspected defects must be reported to the company in writing within five working days of being detected. The company makes no warranty as to the merchantability or fitness for a particular purpose and this warranty is in lieu of all other warranties express or implied. It is expressly understood and agreed that the buyer's sole and exclusive remedy shall be replacement of defective products and under no circumstances shall the company be liable for incidental or consequential damages. The company shall not be liable for damages or any sort including remote or consequential damages, down time or delay loss of profit, the cost of removing and reinstalling material and any other liability the purchaser may have with respect to any other person.



DISCLAIMER

The above expressed Warranty for the product shall be exclusive Warranty and company makes no other Warranties express or implied. The company expressly disclaims any implied Warranties of merchantability and/or implied Warranties of fitness for a particular purpose. The company has not authorized any person to make or give any other warranties or representation oral or written on its behalf.



EVERSHINE BUILD INDIA PVT. LTD.

CIN: U45400TG2008PTC057894

1st Floor, Vaishnavi's Tanmai Plaza, Near Gachibowli Flyover,
Telecom Nagar, Gachibowli, Hyderabad - 500 032, Telangana.

Ph: +91 40 23000891 | Toll Free No. : 1800 425 0699

E-mail: evershinebuild@gmail.com, Website: www.evershinebuild.com